

IVSEC Firmware Update – NC323XC, NC531XA & NC528XB

Prerequisites:

- Laptop / PC with internet connection (to download the firmware)
- Monitor and mouse connected to the NVR
- USB flash drive (*formatted with FAT32*)
- Download required firmware (refer to page 2 of this document)

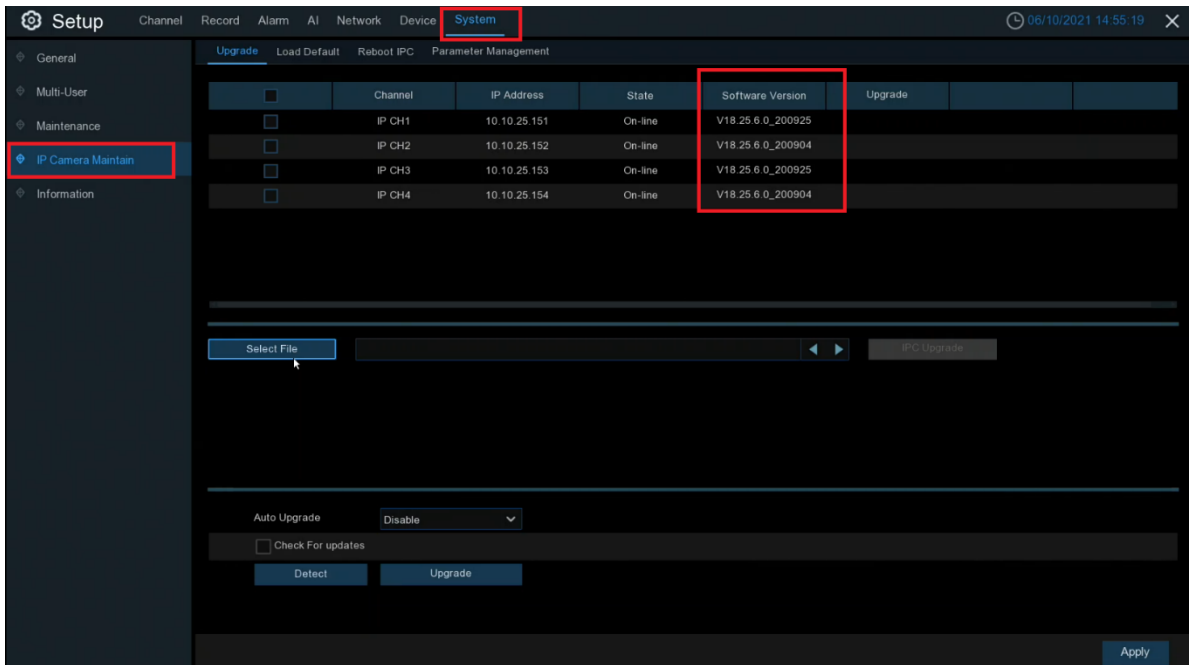
NOTE: Installing the incorrect firmware can cause your camera to fail. Once the Camera has been upgraded to the latest firmware version you will be able to perform future camera updates using online IPC upgrade or via the VMS application.

1. Check the silver sticker on the camera housing. Confirm the model number.



If camera is already installed, you can check the camera model number in “Channel” – “IP Channels” – “Device type” column

No.	Edit	IP Address/Domain	Port	Manufacturer	Device Type	MAC Address	Software Version
POE CH1		10.10.25.151	6000	IVSEC	NC110XB	58-E8-76-06-00-82	V18.25.6.0_2009
POE CH2		10.10.25.152	6000	IVSEC	NC110XB	58-E8-76-06-01-22	V18.25.6.0_2009
POE CH3		10.10.25.153	6000	IVSEC	NC110XB	58-E8-76-06-01-2C	V18.25.6.0_2009
POE CH4		10.10.25.154	6000	IVSEC	NC110XB	58-E8-76-06-00-5F	V18.25.6.0_2009
POE CH5							
POE CH6							
POE CH7							
POE CH8							



3. [Click here](#) to download NC323XC firmware files
4. Extract files from zip and copy the folder
"NC323XC_NC528XB_NC531XA_V12.45.7.1_211225" to USB flash drive
5. Connect USB device to your recorder
6. Important: Check the software version (as inspected in step 2) to the **NC323XC Upgrade Stepping Process** to determine which firmware file to use from the USB flash drive:

NC323XC Upgrade Stepping Process:

If Firmware: --> **Then Upgrade To:** --> **Then Upgrade to:**
V12.45.6.0_200904 --> V12.45.7.0_210301 --> V12.45.7.1_211225
V12.45.6.0_200925 --> V12.45.7.0_210301 --> V12.45.7.1_211225
V12.45.6.0_201114 --> V12.45.7.0_210301 --> V12.45.7.1_211225
V12.45.6.0_201119 --> V12.45.7.0_210301 --> V12.45.7.1_211225
V12.45.7.0_210420 --> V12.45.7.1_211225
V12.45.7.1_210623 --> V12.45.7.1_211225

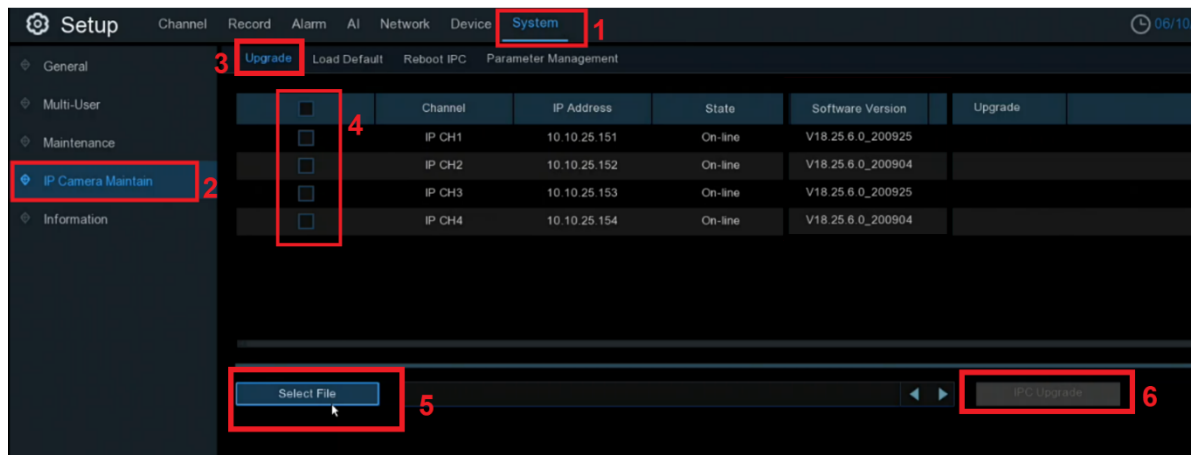
Note: If installed version is before V12.45.7.0_210301, please upgrade transition firmware first. Transition firmware V12.45.7.0_210301 is included in the firmware file of V12.45.7.0_210420 and V12.45.7.1_210623

V12.45.7.0_210301 = *NC323XC_F128M_SF_ENU_IVSEC_V12.45.7.0_210301_9092_W.sw*

V12.45.7.1_211225 = *NC323XC_F128M_SF_ENU_IVSEC_V12.45.7.1_211225_10358_W.sw*

- If your NC323XC cameras are currently running software version V12.45.6.0_200904, V12.45.6.0_200925, V12.45.6.0_201114 or V12.45.6.0_201119 (or skip to step 8 if you are running on a later version) Then go to **System – IP Camera Maintain – Upgrade** – Tick the camera you want to upgrade – Click **Select File** – Browse to the USB firmware file and select firmware file:

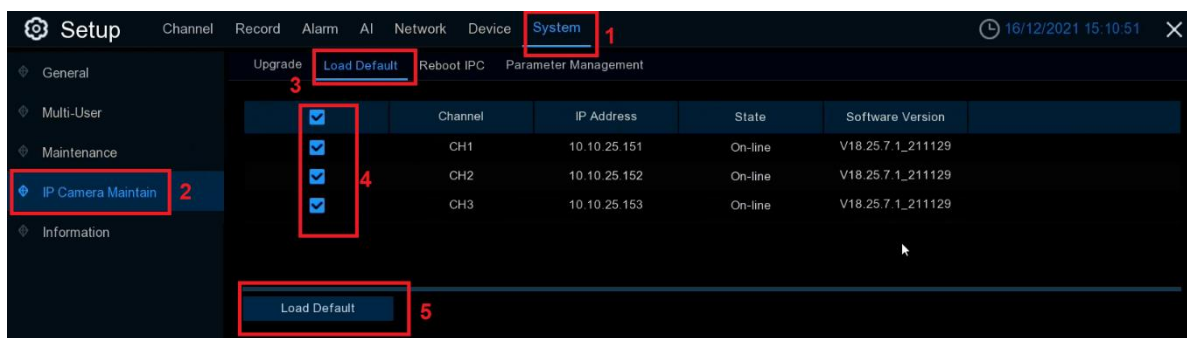
NC323XC_F128M_SF_ENU_IVSEC_V12.45.7.0_210301_9092_W.sw and click OK
Click **IPC Upgrade**



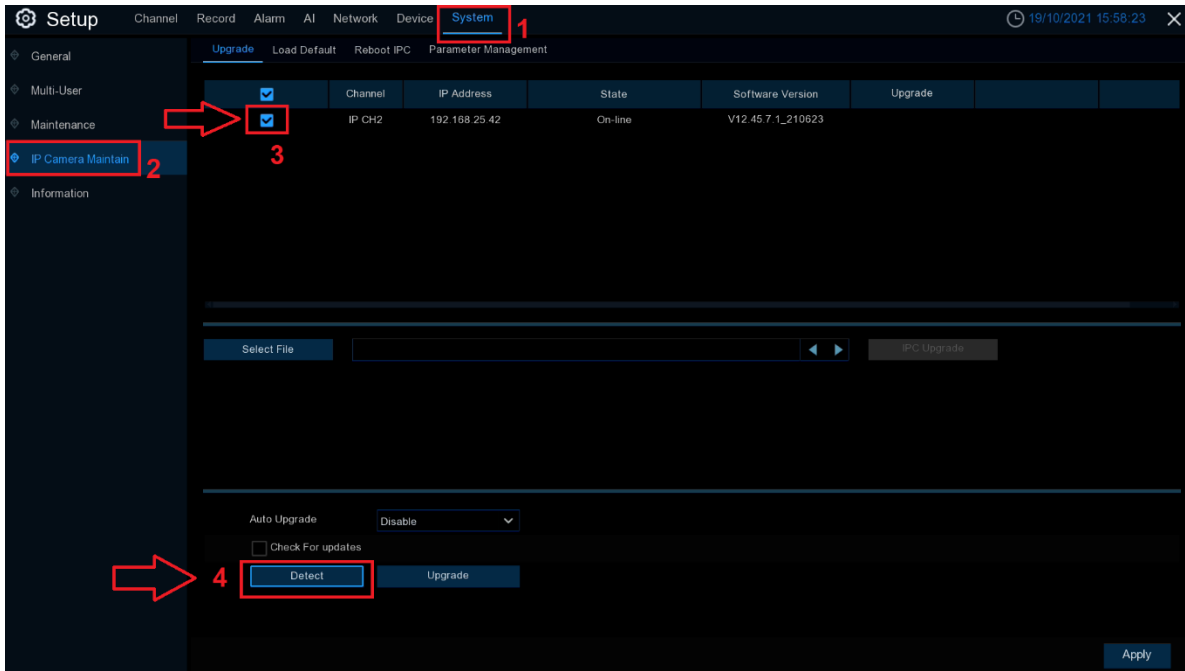
You will be prompted to enter your recorder password for authentication
Wait approx. 3 minutes for FW to update

- Once cameras restart and comes back online repeat step 7 but choose firmware file **NC323XC_F128M_SF_ENU_IVSEC_V12.45.7.1_211225_10358_W.sw**
- Once cameras restart and come back online verify **V12.45.7.1_211225** is now listed as the camera software version and default the cameras to confirm all settings take effect.

System – IP Camera Maintain – Load Default – Tick Cameras, Click “Load Default”. You will be required to enter your NVR password for authentication



- For any future camera firmware updates, you will be able to perform an online update by Click system – IP Camera Maintain – Tick the camera and click Detect. If a new firmware version is available a popup message will appear



If you require additional support, please email service@ivsecurity.com.au with your NVR model, serial number, a brief description of the issue and your contact details.